

APPLICATION

Suitable for permanent or semi-permanent use. The Litedeck is fabricated in the same manner as standard Megadeck stages but without the characteristic truss framing so as to be used for different applications.

NEEDS ASSESSMENT

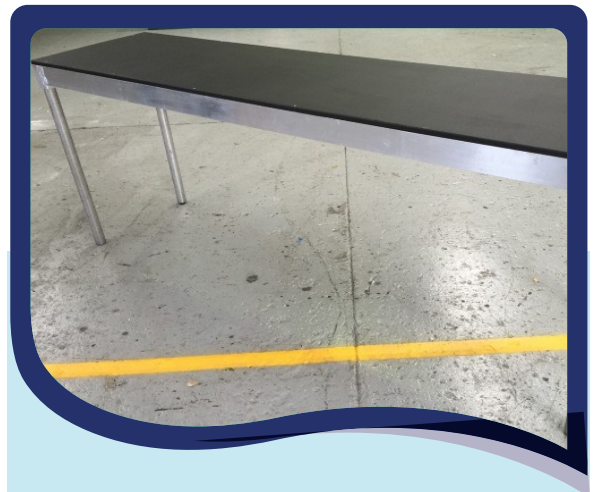
- **DINING TABLES** - The Litedeck with its reduced structural frame height is perfectly suited for dining table use thusly allowing for a comfortable stage height of 700mm and plenty of room for guests legs when seated and tucked into the dining table.
- **BRIDAL TABLE** - Following the exact same principles as the dining table application, the Litedeck when used as a bridal table can be painted white, decorated with floral and cutlery arrangements and accommodate any number of bridal party guests..
- **REGISTRATION TABLE** - Some events will require a registration table for guests or participants to enter or receive information. The Litedeck is the perfect stage for this simple yet necessary event requirement.
- **HOBBY DJ** - For the budding DJ enthusiast who doesn't quite need the professional Megadeck DJ riser, the Litedeck is a suitable option.

TECHNICAL DIAGNOSTICS & SPECIFICATIONS

Routed timber top edges ensure a safe and smooth finish. Precut connection points on all four sides of the Megadeck allow for modular stage configurations. Secure stage legs with star bolts make for quick and easy installations. Stage legs with black end caps for protection of flooring.

RATINGS AND WARRANTY

Every Megadeck stage is made in Australia and constructed from locally sourced materials.



Uniquely designed for low impact use and a practical solution for specific event needs.

FACTS

- Constructed from high grade **aluminium** for a light yet strong frame
- **Structural** 15mm timber top.
- **Measures** - 2400mm wide x 600mm long x 80mm tall
- Weighs **13kg**, a weight well within safe lifting limits
- Suitable **working heights** range from 700mm - 900mm
- **Alterations** - Include custom colours for specific needs such as a white bridal table.
- **Australian** made